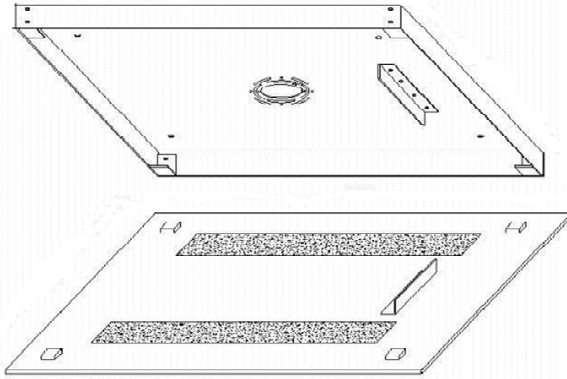


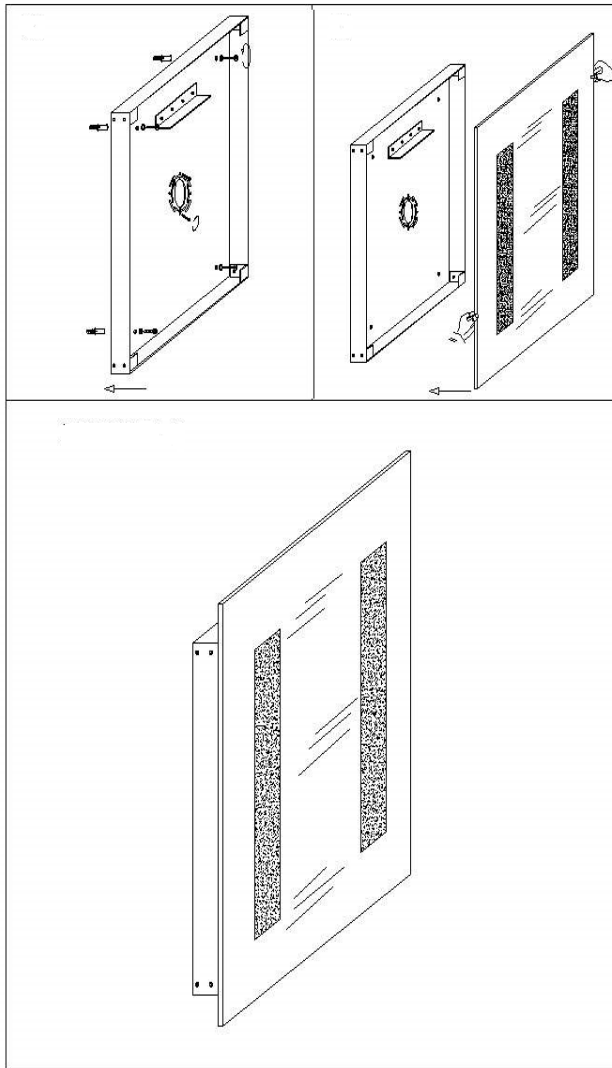


# MIRROR-LUX® STRAIGHT INSTALLATION

Your product is shipped assembled and must be separated for installation.



- There are magnets on each corner to keep the mirror tight to the box.
- Using gloves, gently lay mirror face down on a flat, cushioned surface.
- With one hand, grasp one corner of the **TOP** of the light box, and with the other hand, brace the mirror.
- Without applying force on the mirror, **SLIDE** box **DOWN** to disengage magnets and then **PULL UP** from the mirror. This may require slight force but do not apply excessive force on mirror.



- Four mounting holes are provided for mounting to a solid surface. It is best to engage wall studs, if possible. Use proper hardware (not provided) for your surface type.
- The light box must be hard-wired to a 120V electrical connection; a junction box is not required. An on/off switch is required for control. Some models have 0-10V dimming capabilities.
- For connection to an on/off switch, attach **BLACK** wire to **HOT**, **WHITE** wire to **NEUTRAL** and **GREEN** wire to **GROUND**.
- If connecting to a dimming control, in addition to BLACK, WHITE and GREEN wires, engage **PURPLE** and **GREY** wires in accordance to the dimming control instructions.
- With the light box securely mounted and wired correctly, place the mirror on the light box. Assistance may be needed for large mirrors. Using gloves, hold the mirror on both sides. Bracket is on the top. Gently lower mirror onto the light box. It is important that MIRROR BRACKET is placed on top of LIGHT BOX BRACKET. Check to make sure all four magnets are engaged. This can be done by sliding the mirror left/right as needed. Mirror should be centered on light box.
- The mirror should be cleaned with a dry soft cloth or vinegar based glass cleaners only. Do not spray liquids directly on mirror.



100 Lamp Light Circle / Summerville, SC 29483/ 800-221-9092

[www.aamsco.com](http://www.aamsco.com)